

The Christmas Seal & Charity Stamp Society

has 300 members world wide with all these varied interests. What are yours?

- A. US National TB/ALA seals (Christmas)
- B. US national promotional pins
- C. Seals tied to covers, cards
- D. US local TB seals
- E. Foreign TB seals
- F. Red Cross seals
- G. Patriotic and Veterans seals
- H. Fraternal and Civic seals
- K. Catholic seals
- L. Jewish seals
- M. Other religious & Philosophical seals
- N. American Bible Society seals
- O. Ethnic seals
- P. Pets, plants, and wildlife seals
- Q. Medical seals
- R. Easter seals
- S. Miscellaneous seals (fund raising)
- T. Philatelic related
- U. Non-fund (Cinderellas)
- V. Other (specify)

I am willing to release all information to the directory?

Yes _____

No _____

You might not know it, looking at some catalogues, but the ALA continued issuing Christmas seals after 1979; they still do. Well, we at CS&CSS know that and lots more. *Green's Catalogue*, compiled and edited by CS&CSS, is available through the Society and includes not only those first 70-odd years, but all the following years, when seal-issuing policies changed and got just a tad more complicated: we include the silver foil, Spanish-language, Spring, and test seals as well as the old favorites. We've also added prices and rarity levels for tied seals, a growing collecting interest to tell by the prices on eBay and elsewhere.

But seals are so much more: Catholic seals, sanitariums, Jewish seals, US look-alikes, Santa Claus Post, Bible Study, Wildlife, Easter, NAACP, and more.

For specialists, we delve into the different printers and the plate varieties, with informative articles detailing the many ways seals can be, and are, collected.

There's also ancillary material, like milk bottle tops and sleeves, lantern slides, mailing inserts, and mugs, as well as designer signatures, and more.

It's an exciting time as we look to completely revise *Green's* and explore the growing field of tied seals. Come join us for a fun ride: sleigh not included.

Christmas Seal & Charity Stamp Society



Founded in 1931, CS&CSS promotes and encourages the hobby of collecting anti-TB, charity, and fund seals of the world, and provides information and resources to aid members in the pursuit of this hobby. APS Affiliate 101



What Is *Seal News*?

The "Seal News" is the quarterly journal of the Christmas Seal & Charity Stamp Society. Each of the four issues a year contains between 30 and 40 pages of information designed to provide members with the following:

Articles – interesting aspects of all types of seal collecting including foreign seals, US seals, Easter seals and other charity fund seals.

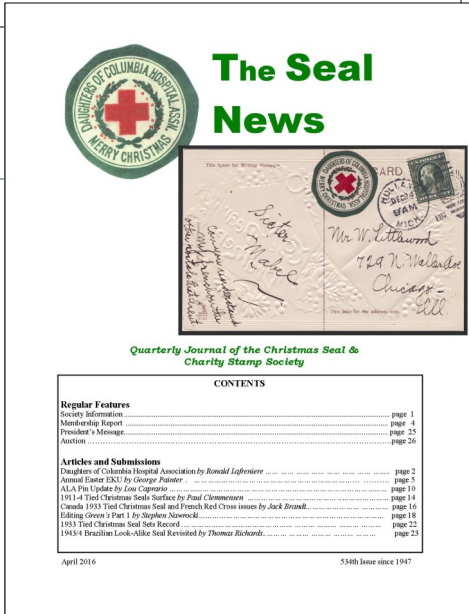
Auction – for members wishing to acquire or dispose of material.

Census Updates for Tied Christmas and Easter Seals

Updates - on new discoveries and annual reports on "earliest known usage" Letters to the Editor and a lot more.

For a sample copy of "Seal News" send \$2.00 to

Membership Chair
3879 Forester Ct.
San Jose, CA 95121



What Are Christmas and Charity Seals?

Christmas and Easter (spring) seals are produced each year nationally by the American Lung Association to help fund its programs of promoting good lung health.

Christmas seals first started in Denmark, Iceland and Sweden in 1904 to raise funds for combating childhood diseases like tuberculosis. The first Christmas seal in the US was sold nationally in 1907.

Many other local charity stamps exist and are very fun and interesting to learn about and collect. Foreign countries have also issued similar seals and stamps dating back to the 1800's.

How to Join the Seal Society:

Anyone 18 years of age or older is eligible to become a member of CS&CSS. Just complete an application like the one attached or electronically on our website: www.charityseals.org/membership. Send your application along with the Society's dues to the Membership Chairman.

Under 18 applicants need a statement from a parent or guardian taking responsibility for the minor's financial obligation.

I hereby apply for membership in the Christmas Seal & Charity Stamp Society, and I agree to abide by the bylaws of this Society.

Dues: \$20 per year; Canada and Mexico: \$22.50 per year; all other countries: \$32.50 per year. All dues inclusive of air mail delivery of four issues of *Seal News*. Digital Only membership, with member only access to all issues of *Seal News* \$12.50. New members joining after June 30 may pay half price for two issues of *Seal News*.

Name _____ over 18

Address _____

City _____ State _____ Postal Code _____

E-mail _____

Phone _____ Did you complete reverse? _____

**Mail application & dues to: Paul Clemmensen, Membership Chair
3879 Forester Ct. San Jose, CA 95121**